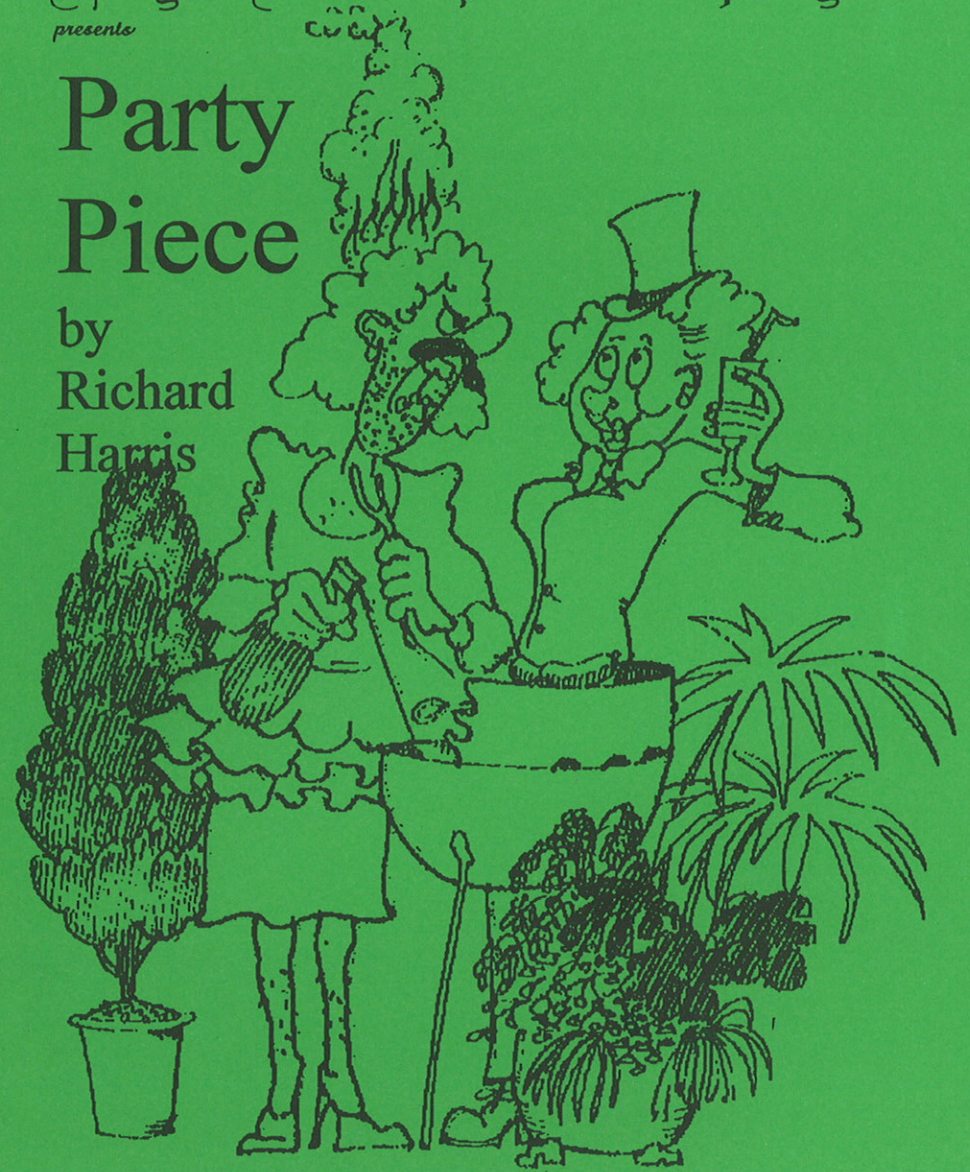




Frayed Knot Theatre Company
presents

Party Piece

by
Richard
Harris



The Court Theatre, Pendley
November 20th - 23rd 8.00p.m.

FRAYED KNOT THEATRE COMPANY

would like to thank



The Garden Centre Tring

for their generosity in lending us shrubs for this production



Matthew Homes Limited



CURRENT AVAILABILITY

NOVEMBER 1996

Abbots Green,
ABBOTS LANGLEY, Hertfordshire.

2, 3 & 4 bedroom homes from £64,995
SHOWHOME OPEN 10 am - 5 pm daily, (01923) 680915

Coltsfoot Lane,
BULLS GREEN, Hertfordshire.

4/5 bedroom detached houses from £375,000
For details contact Bryan Bishop & Partners (01438) 718877

Clayton Fields, Hammonds Ridge
BURGESS HILL, West Sussex.

3 & 4 bedroom houses from £92,995
SHOW HOME OPEN 10 am - 5 pm daily, (01444) 871041

Knightwood Road,
CHANDLERS FORD, Hampshire.

3, 4 & 5 bedroom houses to be released
For details contact (01707) 655550

The Nations, Stebbing Road,
FELSTED, Essex.

5 bedroom detached houses from £230,000
SALES CENTRE OPEN 10am - 5pm Fri - Mon, (01371) 821538

Pilgrims Brook, Ashford Road,
HARRIETSHAM, Kent.

3 & 4 bedroom houses from £77,000
SHOW HOMES OPEN 10am - 5pm daily, (01622) 851200

Calford Park, Chalkstone Way
HAVERHILL, Suffolk.

2, 3 & 4 bedroom houses from £54,995
SHOW HOME OPEN 10 am - 5 pm daily, (01440) 714503

Suffolk Heights, Chalkstone Way
HAVERHILL, Suffolk.

3 & 4 bedroom houses from £58,995
SHOW HOMES OPEN 10am - 5pm daily, (01440) 710310

Cromwell Road
KINGSTON UPON THAMES, Surrey.

1 & 2 bed apartments to be released
For details contact (01707) 655550

Lincewood Gardens, Nightingales
LANGDON HILLS, Essex.

4 bedroom houses from £115,995
SHOW HOME OPEN 10am - 5pm daily, (01268) 410284

Tithe Barn Lane,
ST ALBANS, Hertfordshire.

4 & 5 bedroom houses to be released
For details contact (01707) 655550

Chancellors Road
STEVENAGE, Hertfordshire.

4 & 5 bedroom houses to be released
For details contact (01707) 655550

Ridgewood Vale,
UCKFIELD, East Sussex.

4 bedroom houses from £128,995
SHOW HOME OPEN 10 am - 5 pm daily, (01825) 760799

For further details contact on-site sales centres or Matthew Homes Ltd, Matthew House, 45-47 High Street, Potters Bar, Herts. EN6 5AW. Tel: (01707) 655550

Prices & Opening Times correct at time of publication. Please check before travelling.

FRAYED KNOT THEATRE COMPANY

A Brief History

Frayed Knot Theatre Company was established in 1991 and is therefore now in its sixth year. The Tring area is remarkably well endowed with Amateur Dramatic societies and the nascent Frayed Knot had to work hard to establish itself. As we were an unknown company with very little working capital, customary wisdom may have suggested that our best course of action was to perform a very well-known play to attract the largest possible audience - 'fraid not! The at-that-time unnamed Frayed Knot performed **Marreau and the Chocolate Policeman** an unknown play by an unknown author - with the help of Phoenix Theatre Company. The first performance being at Marsworth Village Hall, to an audience of about fifteen. The play was well received and the cast enjoyed performing it and so it was decided that the sequel, **African Moon** would be the next production. Frayed Knot produced this in Spring 1992 as the company's first solo venture. 1993 was an important year for the company, firstly because we performed two shows in the year, secondly because we performed our first "Course Acting" play, **Moby Dick**, and thirdly because we were able to put the show on at Pendley, something which would have been financially unthinkable a couple of years before. In 1994, as well as the now customary Marreau, we staged our first well-known play **Blithe Spirit**. Last year saw the fifth of the Marreau sequence and our first melodrama, **Sweeney Todd, the barber**. 1996 has been an adventurous year for the company, as we have staged three productions; in April we performed a production of the **Farndale Macbeth** - our most technically tricky show to date - which was very well received. Then in September we performed the sixth - and probably final **Marreau**, in his fateful encounter with the *Clouds of Death* and now in November we're doing this comedy, "**Party Piece**" - which has probably our most complicated set to date. The company is continuing to grow steadily, and we are looking forward to many more successful shows in the coming years. In particular, look out for our spring production next year which will be the classic "**The Importance of Being Earnest**" - we hope we will have the pleasure of your company once again on that occasion.

Rob Farrow, Chairman.

Our Next Production

The Importance of Being Earnest

By Oscar Wilde

Spring 1997

FRAYED KNOT THEATRE COMPANY

presents

Party Piece

A Comedy by
Richard Harris

Previous Productions

1991

Marreau and the Chocolate Policeman
(A co-production with Phoenix Theatre Company)

1992

Marreau and the African Moon

1993

Marreau and the Curse of Cardiff
D.F.C. / Moby Dick : Double Bill

1994

Marreau and the Bloody Carpet
Blithe Spirit

1995

Marreau and the Sword of Carthage
Sweeney Todd, The Demon Barber

1996

Farndale Macbeth
Marreau and the Clouds of Death

Forthcoming Productions

1997

The Importance of Being Earnest
and two more shows yet to be decided

At The Court Theatre, Pendley.

Party Piece by Richard Harris

The Cast

Michael Smethurst

Matt Cox

Roma Smethurst

Sally Bennett

Mrs. Hinson

Sue Tumelty

David Hinson

Matthew Barrett

Jennifer Hinson

Regina Dobbs

Toby Hancock

Ken Hayes

Sandy Lloyd-Meredith

Kate Harvey

Directed by

Wesley Harrison

Production Assistant

Sarah Hawkins

Stage Manager

Johann Meadows

Lighting

Jeff Yates

Sound

Norman Ward

Props

Jessica Harrison

F.O.H. Manager

Colin Hunt

Make-up

Paint by Numbers

Thanks to all who helped with set construction

Party Piece by Richard Harris

Scenes

ACT I

The gardens of the Smethursts and the Hinsons

A Saturday afternoon in summer

== Interval of 20 minutes ==

ACT II

The same, 7.15 that evening

We would like to thank our sponsors, Matthew Homes Ltd. for their support

Author's Note

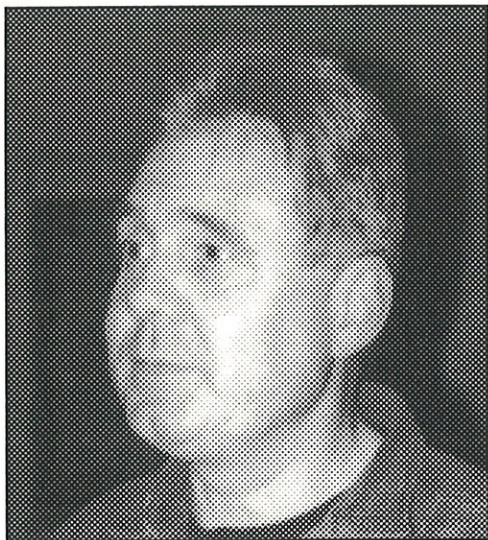
It is the evening of Michael and Roma's housewarming party, The fancy dress theme is "famous couples in reverse". Unfortunately this is bedevilled by a distinct lack of guests and their neighbour, the indomitable Mrs. Hinson, who brings her own brand of party entertainment in the form of the domestic squabbles with and between her son and daughter-in-law.

Richard Harris, the author, has written many plays, probably best known of which are "Stepping Out" and "Outside Edge". They are always strong on characterisation and "Party Piece" is no exception.

The relationships between husbands and wives and mother and son on both sides of the fence are what the play is built on, which together with a well crafted text spiced with barbed and sardonic wit, in particular from Mrs. Hinson, provide a fine piece of drama.

I hope you have as much pleasure from the play as I, the cast and the crew have had in staging it.

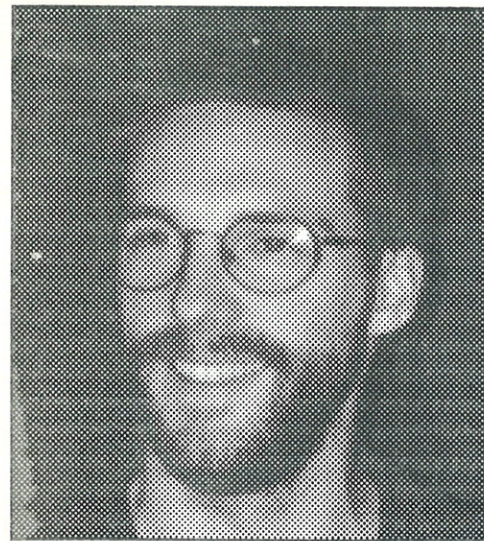
Wesley Harrison, Director.



Director : Wesley Harrison



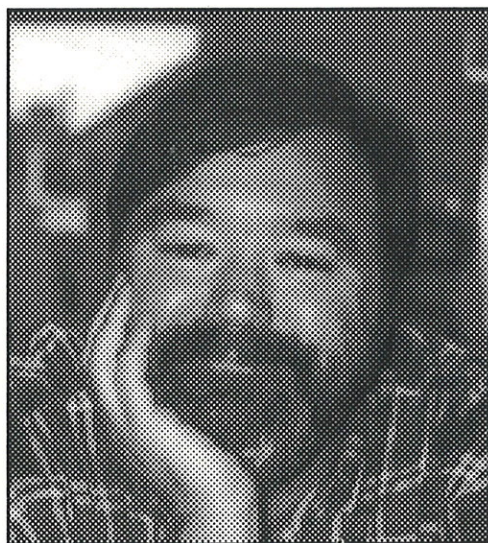
Mrs. Hinson : Sue Tumelty



Michael Smethurst : Matt Cox



Roma Smethurst : Sally Bennett



David Hinson : Matthew Barrett



Jennifer Hinson : Regina Dobbs



Toby Hancock : Ken Hayes



Sandy Lloyd-Meredith : Kate Harvey

Fraged Knot Theatre Company

A warm welcome awaits

Actors & Actresses

Those of a technical disposition

Back-stage crew

Anyone interested in Amateur Dramatics

Membership is just £5.00 a year

Give one of us a ring ...

Rob & Jackie Farrow (01442) 381739 {Home} (01707) 655550 {Work}

Jacque Hildreth (01296) 662732 {Home}

Graham Double (01442) 825422 {Work}

Jenny Booth (01296) 662374 {Home}

Johann Meadows

General Builder

Extensions & Conversions,
Renovations & Decorating,
Roofing a speciality.

(in addition to set building!)

Call 0374-889365 for a no-obligation estimate.

AUTHENTEC

When your data matters!

Data Recovery Services
Consultancy Services
Computer Forensics & Investigation

AuthenTec International Ltd.

Formerly known as

Dr Solomon's Data Recovery Service

Alton House, Gatehouse Way, Aylesbury, Bucks HP19 3XU

Telephone 01296-318813

Facsimile 01296-318814